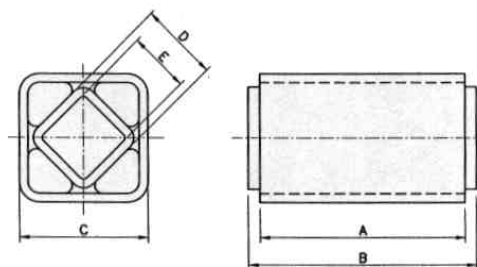


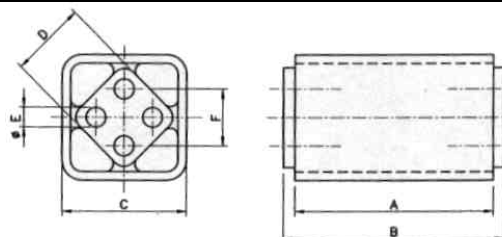
**ELEMENTOS ELASTICOS TIPO «LTS»**  
*RUBBER SUSPENSION UNIT TYPE «LTS»*



 **RESATEC AG**

TIPO TYPE	COPIA M en NM a 32° TORQUE M en NM a 32 °	A	B	C	D	E	PESO WEIGHT Kg
LTS 3-25	8	25	30	27	15	11	0.08
LTS 3-40	13	40	45	27	15	11	0.13
LTS 3-60	19	60	65	27	15	11	0.19
LTS 4-30	20	30	35	32	18	12	0.13
LTS 4-50	34	50	55	32	18	12	0.22
LTS 4-80	54	80	85	32	18	12	0.33
LTS 5-40	56	40	45	45	27	22	0.27
LTS 5-60	85	60	65	45	27	22	0.40
LTS 5-100	140	100	105	45	27	22	0.66
LTS 6-60	160	60	70	60	38	30	0.68
LTS 6-80	215	80	90	60	38	30	0.90
LTS 6-120	320	120	130	60	38	30	1.35
LTS 7-80	315	80	90	72	45	35	1.20
LTS 7-100	390	100	110	72	45	35	1.46
LTS 7-150	580	150	160	72	45	35	2.16
LTS 8-120	720	120	130	80	50	40	2.20
LTS 8-200	1300	200	210	80	50	40	3.50
LTS 8-300	2000	300	310	80	50	40	5.30

**ELEMENTOS ELASTICOS TIPO «LTA»**  
*RUBBER SUSPENSION UNIT TYPE «LTA»*



 **RESATEC AG**

TIPO TYPE	COPIA M en NM a 32° TORQUE M en NM a 32 °	A	B	C	D	∅E	F	PESO WEIGHT Kg
LTA 4-30	20	30	35	32	18	6	12	0.10
LTA 4-50	34	50	55	32	18	6	12	0.15
LTA 4-80	54	80	85	32	18	6	12	0.26
LTA 5-40	56	40	45	45	27	8	20	0.26
LTA 5-60	85	60	65	45	27	8	20	0.37
LTA 5-100	140	100	105	45	27	8	20	0.62
LTA 6-60	160	60	70	60	38	10	25	0.61
LTA 6-80	215	80	90	60	38	10	25	0.80
LTA 6-40	320	120	130	60	38	10	25	1.15
LTA 7-40	315	80	90	72	45	12	35	1.01
LTA 7-40	390	100	110	72	45	12	35	3.00
LTA 7-40	580	150	160	72	45	12	35	4.45
LTA 8-40	760	120	130	80	50	M12x40	40	1.85
LTA 8-40	1370	200	210	80	50	M12x40	40	3.02
LTA 8-40	2050	300	310	80	50	M12x40	40	4.48



**WEDA TRANSMISIONES S.L.**

C./Circunvalación, 45  
 Tel. 93 719 05 57 - Fax 93 718 24 43  
 08210 BARBERÀ DEL VALLÈS (Barcelona)  
 E-mail: rcanerr.weda@nexo.es